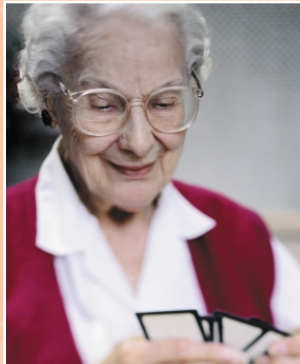


*The flexible, affordable emergency
call system for convalescent, progressive care
and assisted living environments...*

Residence-Call

by Tech Works™



- ◆ Simple to install
- ◆ Easy to expand
- ◆ Improves staff efficiency
- ◆ Ensures responsive patient care

Residence-Call

The intelligent choice in emergency call systems

Only Residence-Call by TechWorks provides a comprehensive, integrated solution for convalescent and assisted living environments. Only Residence-Call enables nurses and other caregivers to respond to patient needs with such freedom and efficiency. Only Residence-Call provides a flexible system that can be easily installed and affordably modified or expanded. And only Residence-Call delivers so much power and flexibility for so much less than competing systems.



Residence-Call keeps nurses in touch without tying them down.

Unlike conventional systems that tie nurses to a call station, Residence-Call provides patient call information virtually anywhere, so nurses always feel in control — even in minimal staffing situations. Solid state *corridor lights* are clearly visible from any direction up to 50 feet away. A nurse can receive patient calls, including room numbers on a *pocket pager*, or she can receive patient voice messages using a *cordless phone* so she is never out of reach. *System status panels* can be placed in key locations wherever necessary, and even the largest facilities can be monitored from a single location.

Choose the component solutions that are most appropriate for your patients' needs.

Patients place a call with a *button* or a *pull-cord*. Pendant or wristband *staff and patient locators* provide additional responsiveness to your system. A fire alarm interface provides notification if a *smoke detector* is activated,



adding to patient protection. All Residence-Call components are clearly labeled and easy for patients to use.

Like a silent sentry, Residence-Call summons immediate assistance.

In assisted-living facilities, residents want to feel as independent as possible, secure in the

knowledge that help is standing by. An *intercom* allows them to talk directly with medical or management personnel; or the system can be configured to allow for *room monitoring*. Discreet *call buttons* and *pull-stations* can be placed in key locations to summon help whenever necessary. And a *check-in system* can alert morning personnel if the resident has not arisen from bed in the morning. Residence-Call allows you to combine all of these options into a single, customizable system that can grow and change to fit your needs.

This intelligent, programmable system ensures responsive patient care.

All Residence-Call components can be programmed so that your system can meet a variety of custom needs. Attach a *desktop printer*, and Residence-Call records every patient call with time and date so that your rapid response to patients' needs is fully documented, reducing liability. And with an optional *PC interface*, you can capture Residence-Call report data for in-depth computer analysis.



Easy to install, modify or relocate, Residence-Call expands to meet your needs.

Unlike other systems that rely on complex electrical wiring, Residence-Call uses a simple *twisted-pair cable* running from room to room. That means that your system is less costly to install and easy to expand, relocate, customize or upgrade. You can even *link remote facilities* into a single system with minimal investment! Since Residence-Call

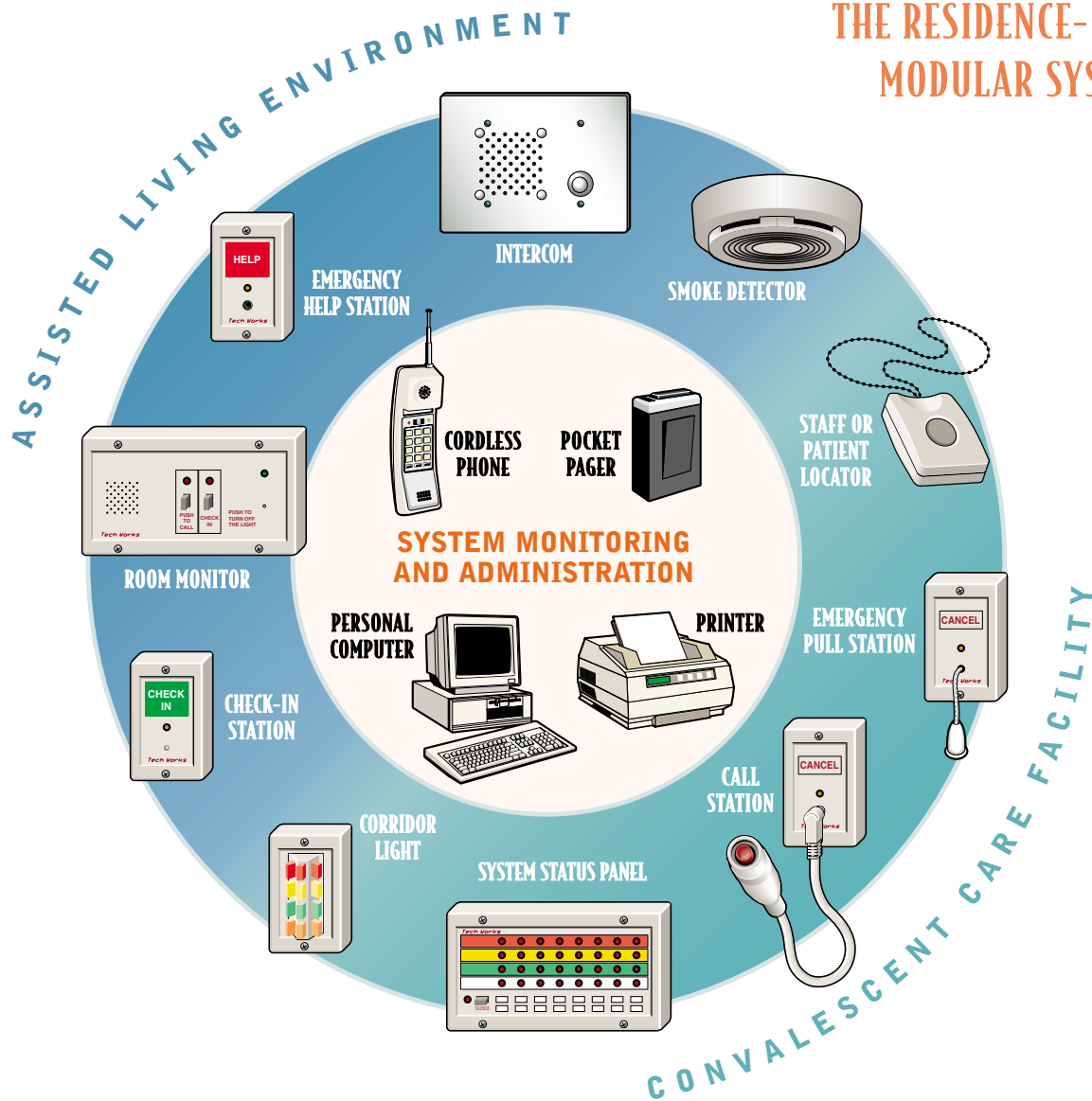
is *entirely modular*, you only pay for the components you need. And you can be assured that new options can be added to your system as soon as they are available. Residence-Call is priced to fit the smallest environments, yet it is *expandable up to 4,096 stations!*

Residence-Call is a tested, reliable system that won't break your budget.

Residence-Call components are *UL-approved* and designed to

withstand the punishing demands of the busiest healthcare environments. Built entirely of *solid-state components*, Residence-Call is highly cost-effective to operate. Its power consumption is very low, and its solid-state lights never need replacing. And because Residence-Call is scalable and upgradable, you won't have to replace your Residence-Call system as your facility grows and changes.

THE RESIDENCE-CALL MODULAR SYSTEM



Residence-CallTM

The intelligent choice in emergency call systems for convalescent, progressive care and assisted living environments

Responsive

Keeps nurses in touch without tying them down to a nurse station by combining cordless phones and pagers with corridor lights, system status panels and a host of patient call and monitoring devices.

Efficient

Flexible design allows the entire system to be monitored from a single location, freeing personnel for other duties. Nurses can roam freely, providing comprehensive patient monitoring — even with minimal staff.

Modular

Choose the most appropriate communication components for your needs. All can be seamlessly integrated into a single system, and you only pay for the components you need.

Customizable

Programmable components allow you to specify system performance to meet your specific needs.

Universal

Convalescent and assisted living environments can share an integrated network — even if they occupy separate buildings.

Accountable

A desktop printer records all patient calls and staff responses with date and time, limiting your liability. An optional PC interface captures data for in-depth computer analysis.

Affordable

Simple twisted-pair cable makes this system simple to install and easy to modify or expand. Span multiple floors or remote buildings with minimal investment.

Expandable

A single system accommodates up to 4,096 stations. Expand or modify your system without costly system redesign and re-wiring.

Upgradable

New options can be seamlessly integrated into your system as soon as they are available.

Cost-Effective

Built entirely of solid-state components, Residence-Call consumes little power; status lights never need replacing.

Reliable

Residence-Call components are UL-approved and built to last in punishing environments.

Available

Residence-Call is available now. Call us for a qualified systems integrator near you.



Tech Works

"Making Technology Work For People"